

BE LOVED[®]

ORIENTAL COSMETICS

YOUR CARE FROM KOREA[®]

BE LOVED[®] IS

ORIENTAL COSMETICS

Latest developments of Korean cosmetology

The Korean cosmetics is known by the use of most advanced technologies. The Korean scientists permanently search for new components and study traditional active components used in the cosmetics. They improve methods for processing thereof, find the most efficient combinations and formulas to surprise women all over the world with their powerful cosmetic products.

Most popular active components from Korea

Unique coastal Korean climate, its distinct landscapes, and air rich in oxygen lead to perfect conditions for natural growth of plants with high healing and caring powers. RB Group has been utilizing pharma-grade components that have been thoroughly studied and possess the properties confirmed during clinical trials.

Quality control at all steps

Our Korean partner, RB Group, present in the international market for over 20 years, has been operating a production certified by Quality Management Standards ISO 9001, 14001, 22716 which confirm that the finished product is strictly controlled at each step, from searching for components to producing the finished product.

Visible result after first use

Today, unique national youth and longevity formulas that have been proven by years, are used as a basis for cosmetic research, provide a powerful scientific base, and prove their high efficiency.

Individual approach

All products combine well with each other and supplement your basic care perfectly. You can easily choose products intended for your purpose and for your skin and integrate them into your daily beauty routine.

5 Reasons To Choose BE LOVED[®]

ORIENTAL COSMETICS

1 Perfect cleanliness

Asian women pay much attention to facial skin cleanliness. This is the reason why the Korean cosmetics offers so many cleansing products. Step-by-step cleansing: at least two products every day, to remove make-up and to clean your skin.

2 Active moisturizing

Moisturizing creams, patches, masks help achieving the Chok Chok effect, i.e. morning dew effect, when the skin shines because of moisture rather than because of skin fat.

3 Delicate care

The Korean cosmetology offers many innovations, partly because of sensitive skin in most Koreans. This fact inspires scientists to perform research, study feedback and strive to use most efficient and mild components.

4 Constant renewal

Koreans actively use peeling and scrubbing products and permanently stimulate their skin cell renewal, thus achieving fresh, polished, and smooth skin.

5 Natural beauty

The Korean cosmetologists are certain that, if you use cosmetic products, you can stop wearing makeup because proper care makes your facial skin feel perfect.

Cleansing

Good (although not too much) cleansing is a key to skin health. Via multistep cleansing, the Korean women avoid skin imperfections. Moreover, efficient cleansing is a key to good penetration of active components during further steps of your care. Our range offers Korean products for cleansing, which rapidly dissolve makeup without rubbing and clean your skin delicately causing no irritation. This approach allows avoiding skin injuries and enjoying its clean and smooth look.



Moisturizing

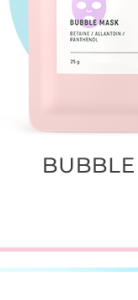
Your skin is vulnerable if it is not moisturised. As well as frequent stress lead to hydrophilic layer thinning and enhanced moisture evaporation from the skin. De-moisturised skin is sensitive and dull; it scales or becomes too oily. Timely moisturizing decelerates skin decline, strengthens immunity, and accelerates skin regeneration. Therefore, the Korean scientists create cosmetics for all age, which is known for its ultra-moisturizing properties.

Cleansing

Basic



PERFECT CLEANSING OIL



CLEANSING FOAM

Intensive

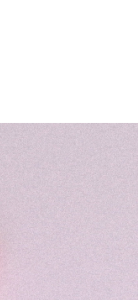


DEEP CLEANSING ENZYME POWDER



BUBBLE MASK

Basic



ULTRA LIGHT CC CREAM

Intensive



HYDRO BOOSTER MASK

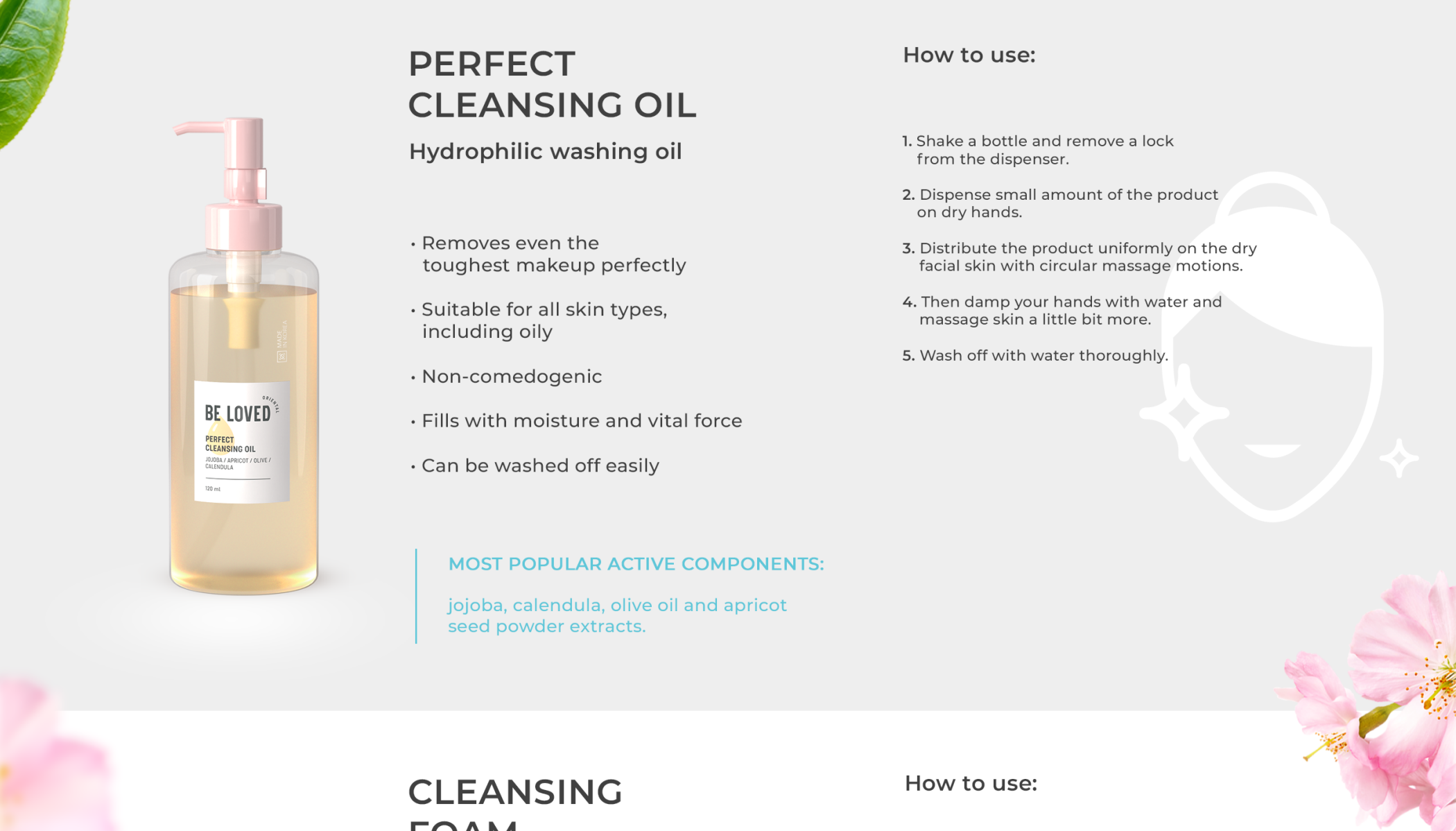


LIFTING HYDROGEL MASK



EYE PATCHES

Moisturizing



PERFECT CLEANSING OIL

Hydrophilic washing oil



- Removes even the toughest makeup perfectly
- Suitable for all skin types, including oily
- Non-comedogenic
- Fills with moisture and vital force
- Can be washed off easily

MOST POPULAR ACTIVE COMPONENTS:

jojoba, calendula, olive oil and apricot seed powder extracts.

How to use:

1. Shake a bottle and remove a lock from the dispenser.
2. Dispense small amount of the product on dry hands.
3. Distribute the product uniformly on the dry facial skin with circular massage motions.
4. Then damp your hands with water and massage skin a little bit more.
5. Wash off with water thoroughly.



CLEANSING FOAM

Cleansing foam



- Suitable for all skin types
- Delicately cleans your skin
- Removes irritation
- Restores elasticity
- Provides an antioxidant effect

MOST POPULAR ACTIVE COMPONENTS:

centella asiatica, camellia, purslane, cinnamon extracts.

How to use:

1. Shake a bottle, remove a lid from the dispenser.
2. Dispense small amount of the product on wet hands.
3. Distribute uniformly on the face with circular massage motions.
4. Then wash off with water thoroughly.

DEEP CLEANSING ENZYME POWDER

Enzyme powder for deep cleansing



- Suitable for all skin types
- Cleans pores deeply
- Evens out the skin
- Removes sun spots
- Removes ingrown hair

MOST POPULAR ACTIVE COMPONENTS:

papain, centella asiatica, camellia extract.

How to use:

- As a washing product:**
1. After removing the makeup, pour enzyme powder on your hand. "Smart" dispenser will measure the amount required for one application.
 2. Add small amount of water and make a foam.
 3. Apply the product onto the face with soft circular motions, and massage.
 4. Wash off thoroughly with warm water.

- As a peeling mask:**
1. Mix powder and water in the ratio 1:1.
 2. Apply the mask onto the face.
 3. In 5-10 minutes, wash off the powder residues with warm water.

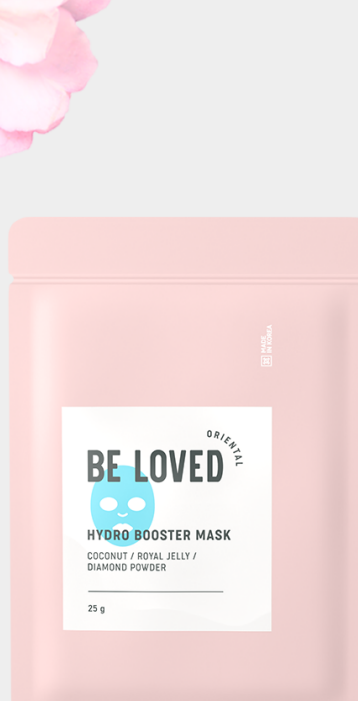
- As a body cleansing product:**
1. Apply small amount of the product on a wet shower pouf.
 2. Make a foam and distribute on the body, massage.
 3. Wash off with warm water.

Do not use in case of skin injuries and wait for at least 24 hours after hair removal.



BUBBLE MASK

Cleansing fabric mask



- Suitable for all skin types
- Efficiently cleans your skin without drying it out
- Improves microcirculation and strengthens capillars
- Initiates skin renewal process
- Moisturizes and restores hydro-balance

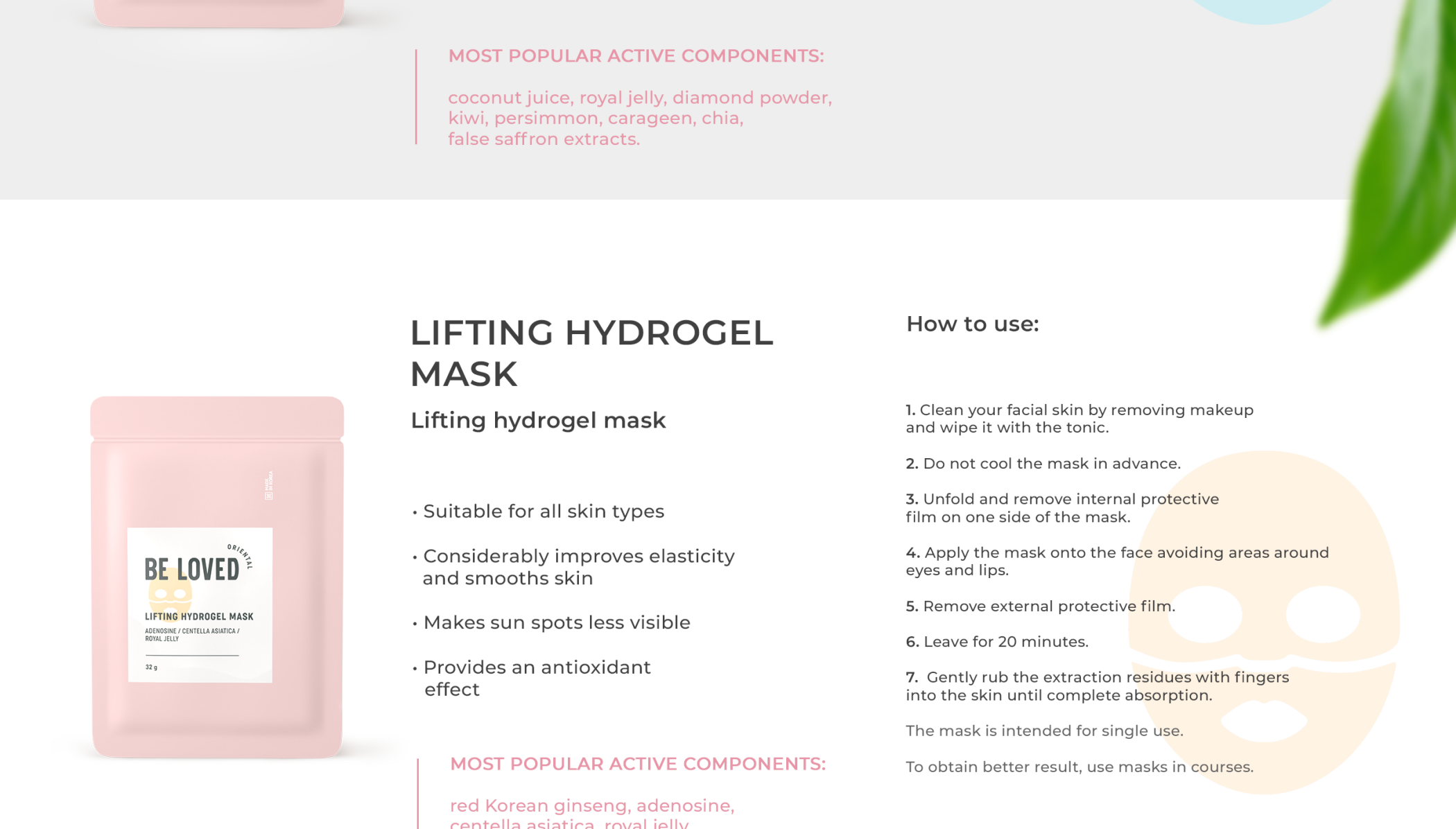
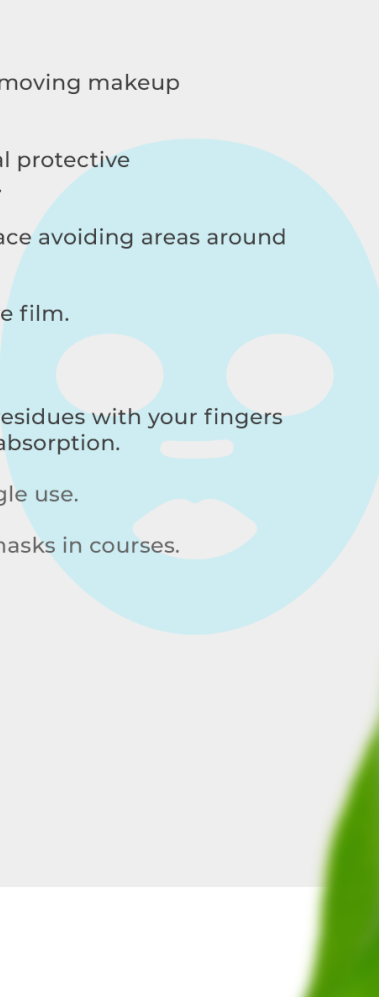
MOST POPULAR ACTIVE COMPONENTS:

betaine, allantoin, panthenol.

How to use:

- Use after removing makeup.
1. Open the package and take a mask.
 2. Unfold the mask and apply it to the face so that it would sit on the face tightly.
 3. Leave the mask for 15-20 minutes.
 4. Wash off the extraction residues with water.

The mask is intended for single use.



HYDRO BOOSTER MASK

Cellulose moisturizing mask



- Suitable for all skin types
- Moisturizes and retains moisture
- Improves skin elasticity and smooths small wrinkles
- Promotes skin regeneration at the cellular level
- Tonifies and nourishes your skin

MOST POPULAR ACTIVE COMPONENTS:

coconut juice, royal jelly, diamond powder, kiwi, persimmon, carageen, chia, false saffron extracts.

How to use:

1. Clean your facial skin by removing makeup and wipe it with the tonic.
2. Unfold and remove internal protective film on one side of the mask.
3. Apply the mask onto the face avoiding areas around eyes and lips.
4. Remove external protective film.
5. Leave for 20 minutes.
6. Gently rub the extraction residues with your fingers into the skin until complete absorption.

The mask is intended for single use.

To obtain better result, use masks in courses.



LIFTING HYDROGEL MASK

Lifting hydrogel mask



- Suitable for all skin types
- Considerably improves elasticity and smooths skin
- Makes sun spots less visible
- Provides an antioxidant effect

MOST POPULAR ACTIVE COMPONENTS:

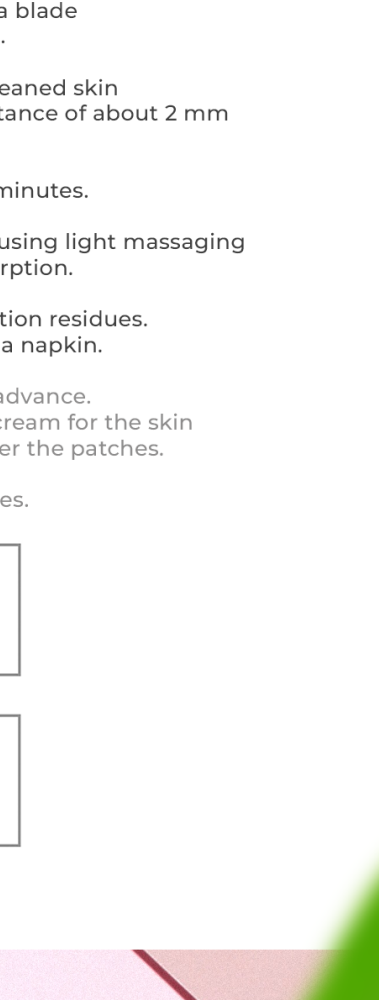
red Korean ginseng, adenosine, centella asiatica, royal jelly.

How to use:

1. Clean your facial skin by removing makeup and wipe it with the tonic.
2. Do not cool the mask in advance.
3. Unfold and remove internal protective film on one side of the mask.
4. Apply the mask onto the face avoiding areas around eyes and lips.
5. Remove external protective film.
6. Leave for 20 minutes.
7. Gently rub the extraction residues with fingers into the skin until complete absorption.

The mask is intended for single use.

To obtain better result, use masks in courses.



ULTRA LIGHT CC CREAM

Improving CC cream three tones: Ivory, light beige, beige

- Suitable for all skin types
- Moisturizes skin throughout all day
- Masks imperfections and provides an anti-inflammatory effect by preventing them
- Provides shine and smoothness
- Provides an antioxidant effect

MOST POPULAR ACTIVE COMPONENTS:

collagen, hyaluronic acid, centella asiatica, camellia, rose, rose hips, purslane extracts.

How to use:

1. Clean your facial skin by removing makeup and wipe it with the tonic.
2. Apply the CC cream in a thin layer as a tonifying moisturizer.
3. Do not rub and do not apply the product in layers.
4. Then you can complete or proceed with applying the makeup.

